

CDI MEDIA



REF: TWO PAGES CARD

R/R: X = 4.7500, Y = 4.7240

We want to duplicate your success!

FM4.9.2-.005 Revision A 05/01/03

FRONT

REF: 4 PAGES CD FOLDER.
R/R: X = 9.5000, Y = 4.7240

CDI MEDIA



We want to duplicate your success!

FM4.9.2-.006 Revision A 05/01/03

Front

CDI MEDIA

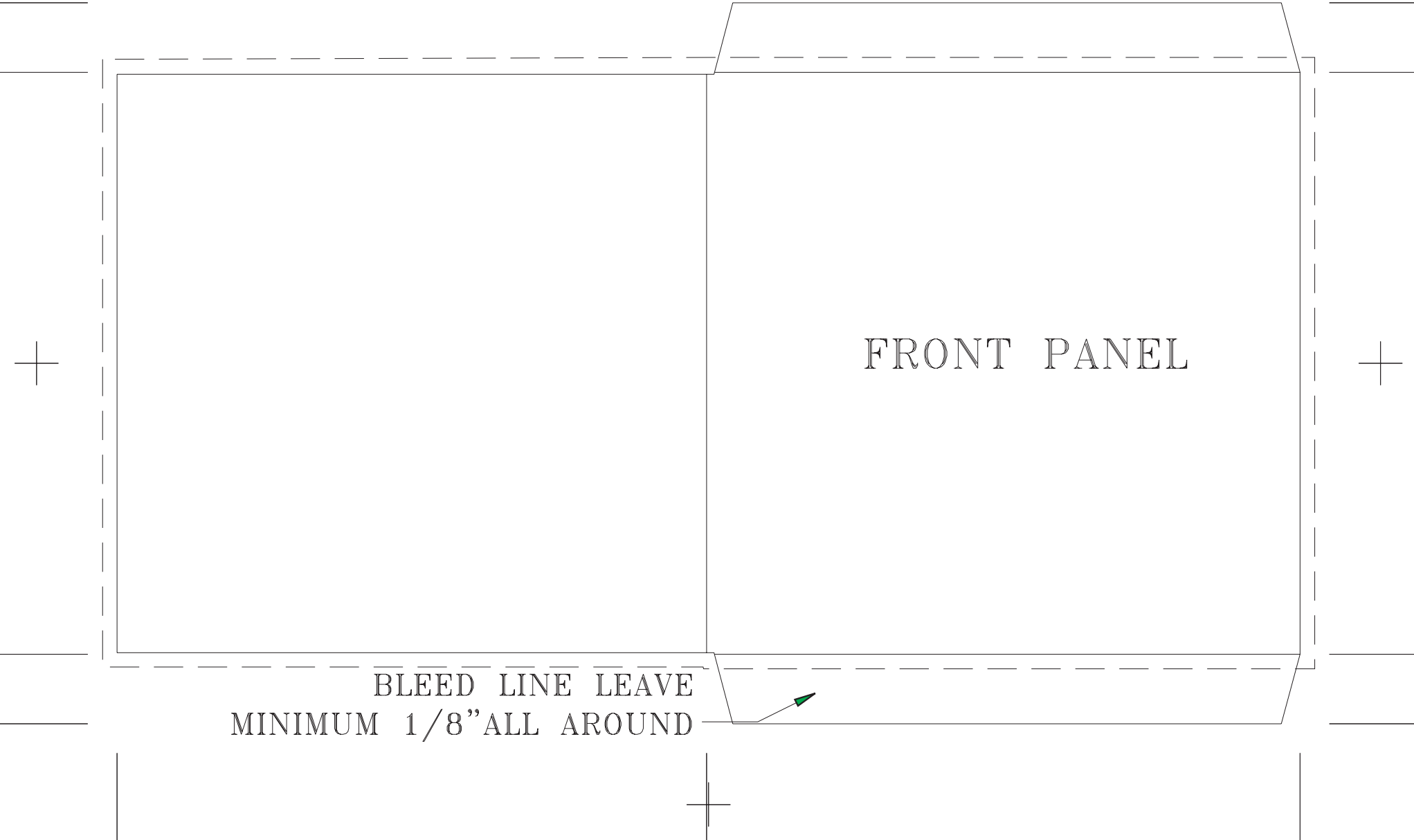


We want to duplicate your success!

FM4.9.2-.008 Revision A 05/01/03

4.969" X 0" X 5.062"

R/R: X = 10.0938, Y = 6.1566



CDI MEDIA



We want to duplicate your success!

FM4.9.2-.009 Revision A 05/01/03

4.6870

4.7500

4.7500

back

Front

4.7240

14.1870

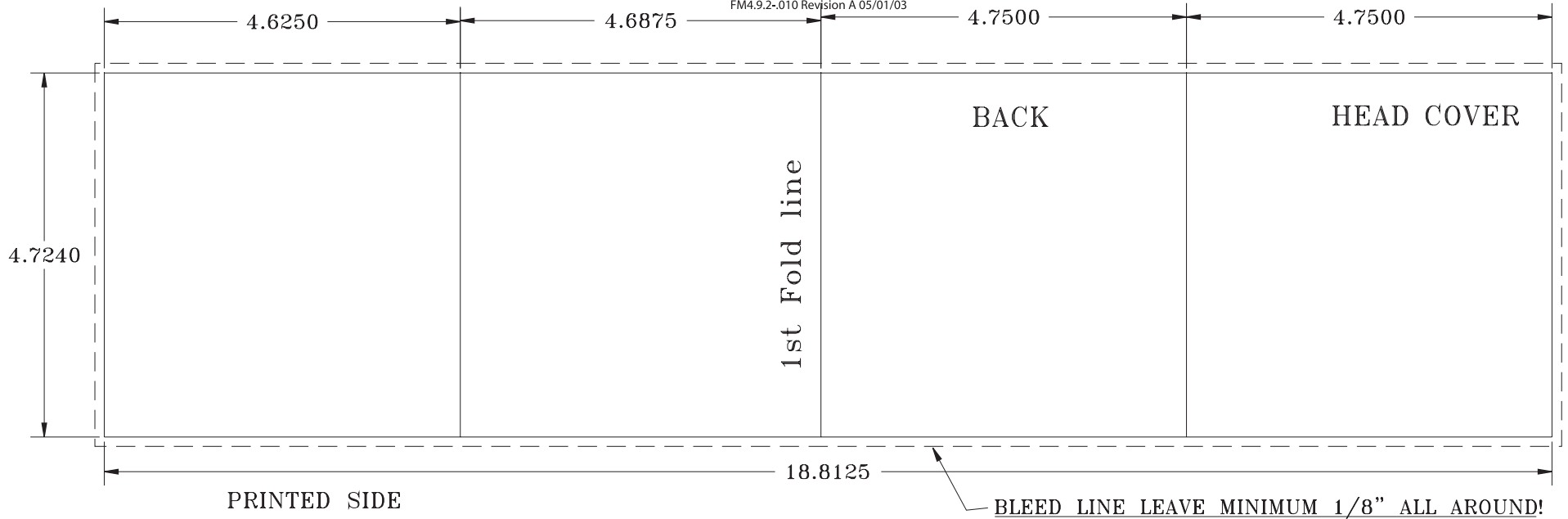
BLEED LINE LEAVE MINIMUM
1/8" ALL AROUND BOX.

CDI MEDIA



We want to duplicate your success!

FM4.9.2-010 Revision A 05/01/03



CDI MEDIA



We want to duplicate your success!

FM4.9.2-.011 Revision A 05/01/03

REF: CASSETTE "O" CARD.

R/R: X = 6.6366, Y = 4.0312

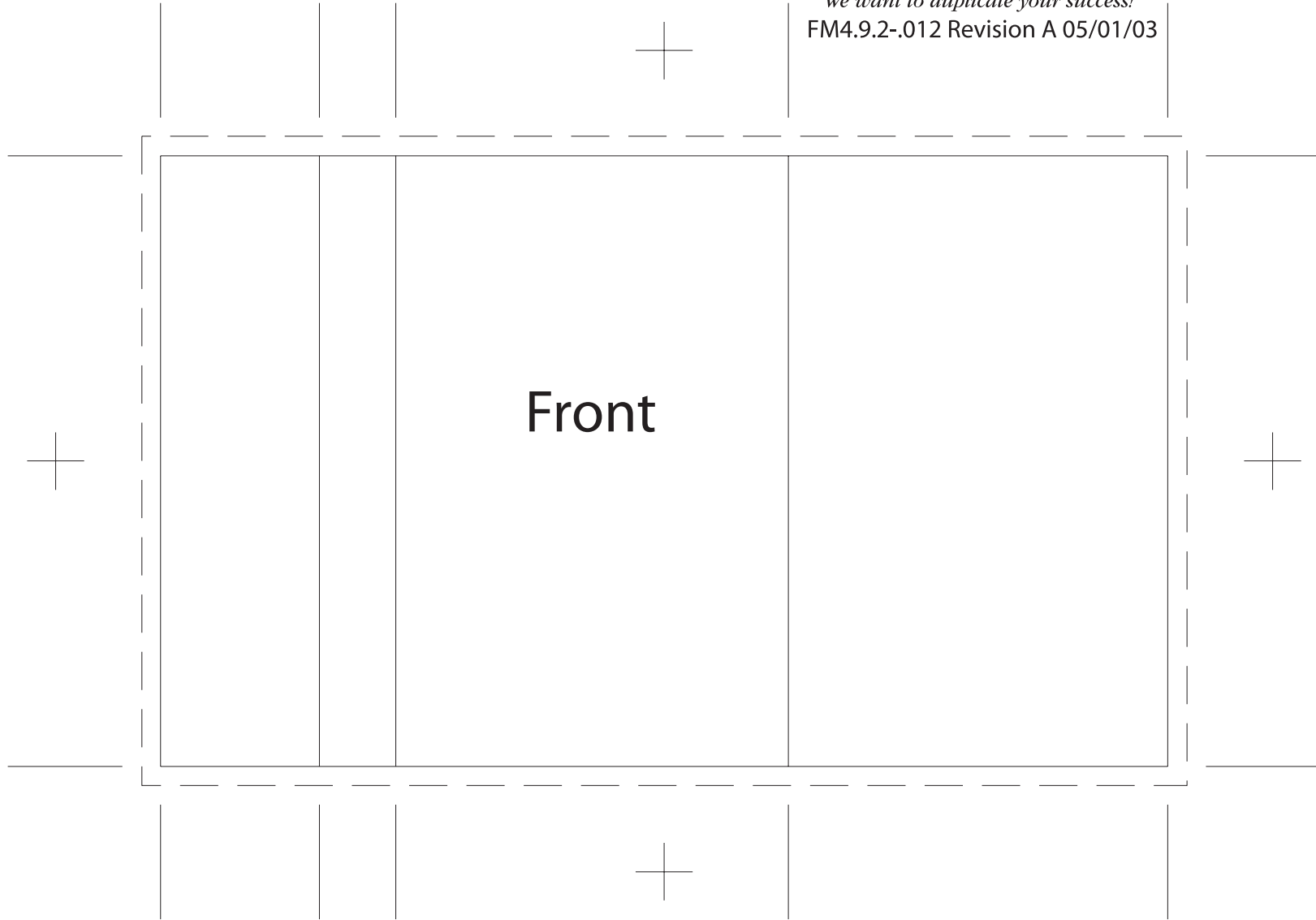
FRONT

REF: CASSETTE "J+1" CARD
R/R: X = 6.5930, Y = 4.0000

CDI MEDIA



We want to duplicate your success!
FM4.9.2-.012 Revision A 05/01/03



CDI MEDIA



REF: CD JEWELBOX TRAY CARD

R/R: X = 5.9063, Y = 4.6250

We want to duplicate your success!

FM4.9.2-.014 Revision A 05/01/03

1/4

1/4

4 5/8

5 13/32



Back Panel

4 Panel DVD Folder Trim: 9.5" X 7.25"



Front Panel

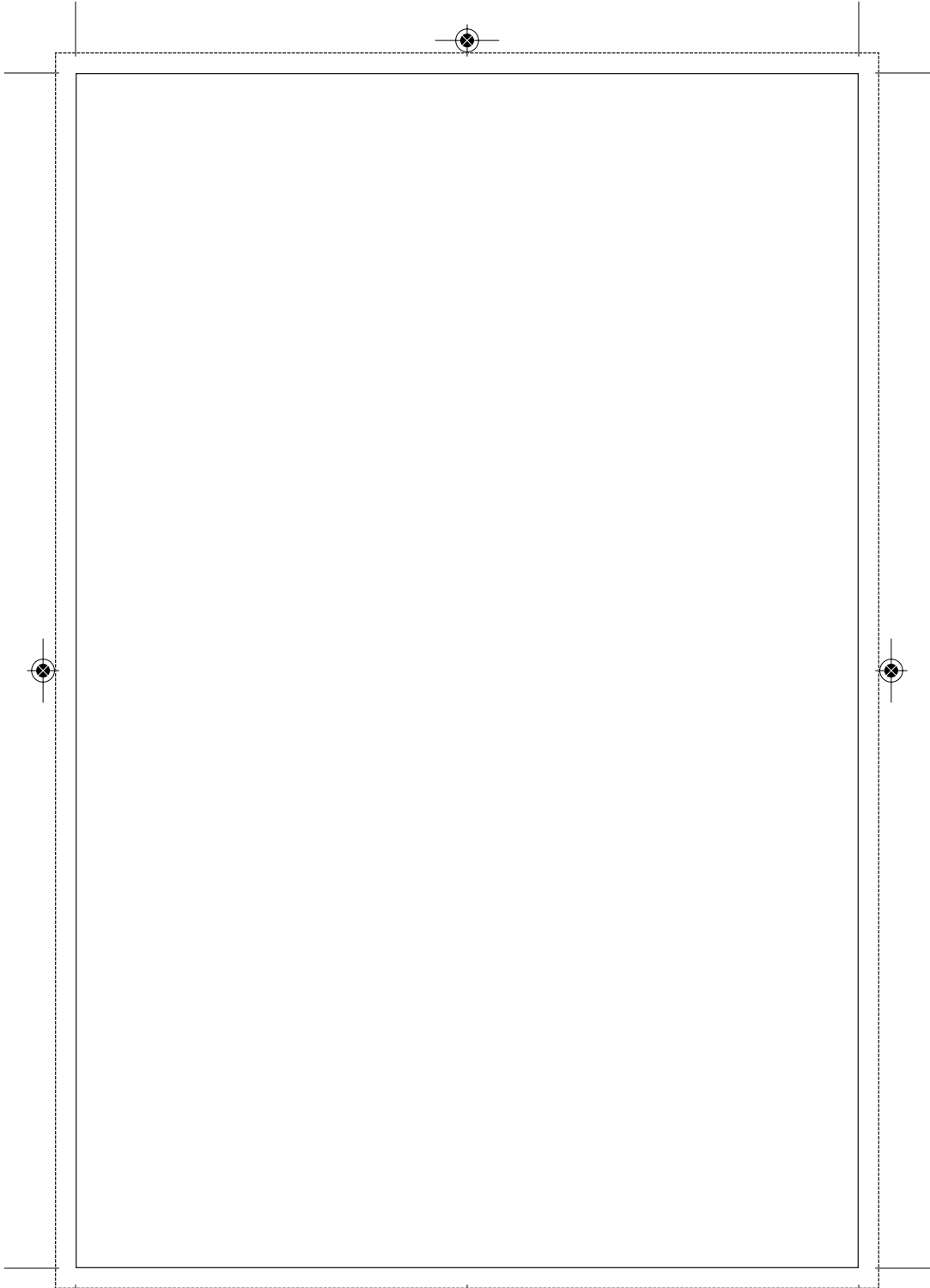
Back Panel 5.0937"

DVD Entrapment Trim: 10.75" X 7.1875"
Dashed line = Bleed Solid Line = Trim

Spine 0.523"



Front Panel 5.0937"



2 Panel DVD Insert
Trim: 4.75" X 7.25"



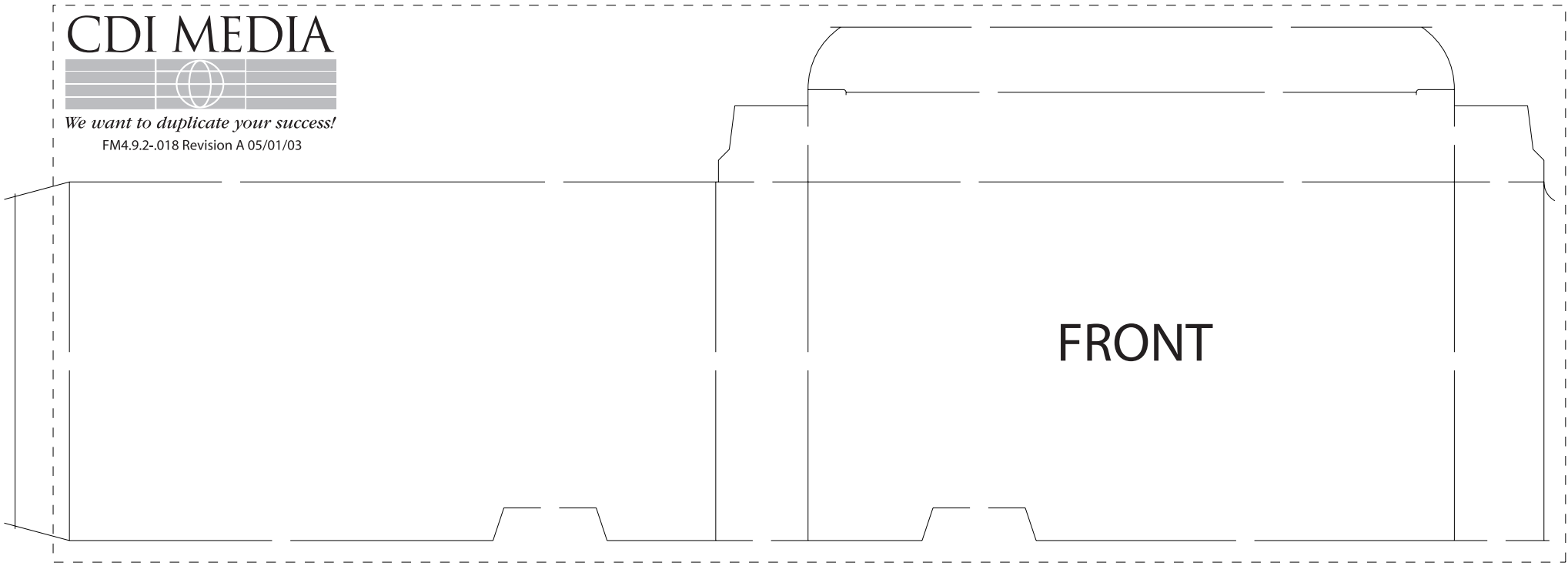
CDI MEDIA



We want to duplicate your success!

FM4.9.2-018 Revision A 05/01/03

FRONT



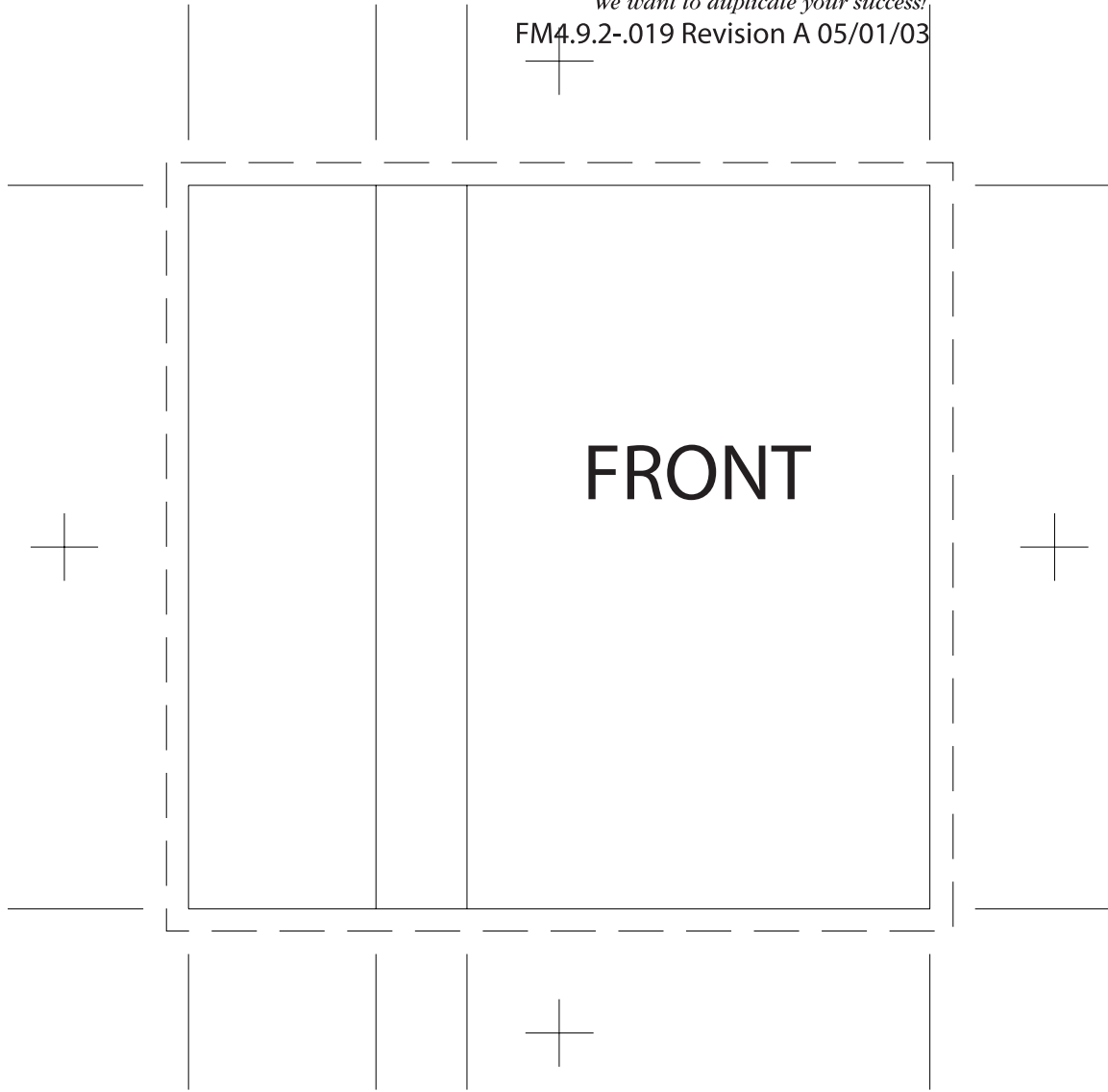
REF: C ASSETTE " J-CARD"
R/R: X = 4.1016, Y = 4.0000

CDI MEDIA



We want to duplicate your success!

FM4.9.2-.019 Revision A 05/01/03



CDI MEDIA



We want to duplicate your success!

FRONT

SPINE: 1"

Video Insert: (w) 5.0625" X 1" {Spine} X 5.0625"
(h) 7.75"

Template Name: 4 Panel CD Wallet

CDI MEDIA



We want to duplicate your success!
FM4.9.2-.007 Revision A 05/01/03

